

LED SLIM Light-bars

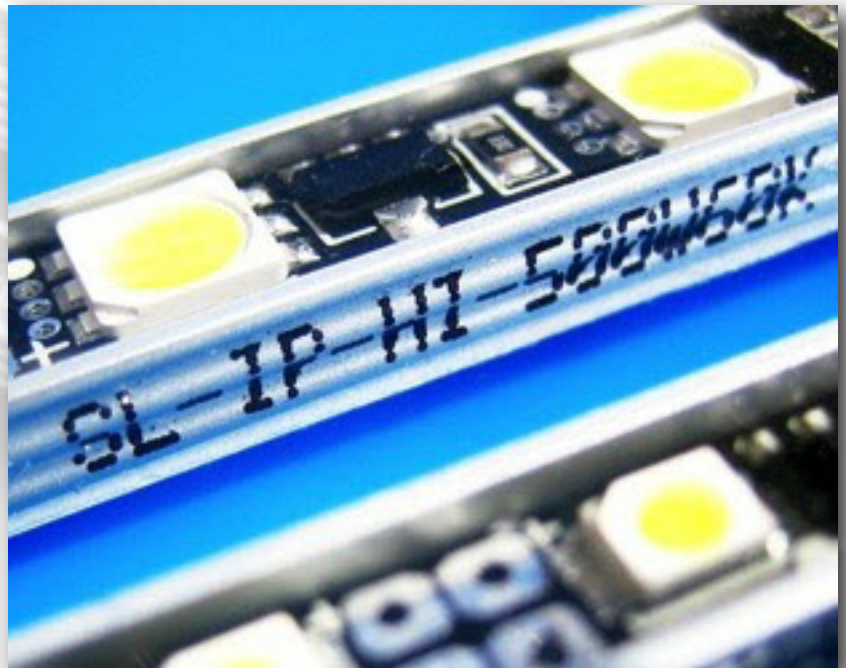
For Interior/Exterior Lighting

The Optimal Solution for

- *Background Lighting*
- *Indirect Lighting*
- *Edge Lighting*

Main Features Include

- *Linear Light Output*
- *Over-current protection*
- *Cut after every 3 LEDs*
- *Safe, low-voltage operation*
- *Flash and dim-able*
- *High colour consistency due to fastidious batch selection*
- *Uniform lighting due to wide angle light output*
- *High energy efficiency*
- *Designed with simplicity of installation in mind*
- *For indoor and outdoor applications (IP66)*
- *Made in South Korea by NP Lighting*





Description

LETROLED Slimline Bars are line shaped electronic circuit boards available in two protection levels (IP00 and IP66) and two brightness levels to meet the individual needs of any application. The slim line bars can be cut after every 3 LEDs and can be daisy chained up to 5 times.

Application

The slim line bars were developed with the illuminated advertising industry in mind. These are optimally suited for the illumination of contours or for installation in extremely flat surface lighting applications via edge-lighting (transparencies, light boxes, illuminated frames, and ceiling floodlights).

Due to its high protection class (IP66), the system is ideal for outdoor use and does not require additional boxing. A typical outdoor application would be wall washers, where the bars are installed parallel to the facade.

Technology

The LETRO SLIM LED strips are designed to work with power supplies that provide a constant voltage of 12VDC. The strips consist of several segments of 3 LEDs each, which are serially connected. The strips are divisible between each of these sections. Each segment has its own dedicated current controller providing the LEDs with a constant power supply and thus guaranteeing a long lifetime.

Assembly

With the help of a fine hacksaw, it is possible to separate the LEDs at every section point (every 3 LEDs) and to cut them to the desired length.

Connecting the LED bar wires is simple and is done with the help of special gel filled crimp connectors (IP66). Stripping the cable ends is not necessary. When connecting several bars in series, we recommend doing a Y-circuit connection (see installation details). All light bars are fitted with 3M double sided tape for easy attachment to almost any surface.

Colours / Multi-colour (RGB)

The standard program consists of cool white (6500K), warm white (3500K), red, green, blue, and amber. Special colours and temperatures are available upon request. The LED strips are also available in a RGB version, though they differ slightly in dimension.

Dimming and Remote Controls

All modules are dimmable and switchable. For this we offer a comprehensive range of controllers. These range from simple stand alone devices with a predefined set of programs, over remote controllable systems using KNX/EIB buses, to sophisticated controls systems adhering to the DMX protocols.





White	6500K
160 lm	63 : CRI
Product no. IP00	SL-CL-420W65K
Product no IP66	SL-IP-CL-420W65K
White	3500K
130 lm	68 : CRI
Product no. IP00	SL-CL-420W35K
Product no. IP66	SL-IP-CL-420W35K
Red	Product no. IP00 SL-CL-420R
625 n.m	Product no. IP66 SL-IP-CL-420R
Green	Product no. IP00 SL-CL-420G
525 n.m	Product no. IP66 SL-IP-CL-420G
Blue	Product no. IP00 SL-CL-420B
465 n.m	Product no. IP66 SL-IP-CL-420B
Amber	Product no. IP00 SL-CL-420A
595 n.m	Product no. IP66 SL-IP-CL-420A

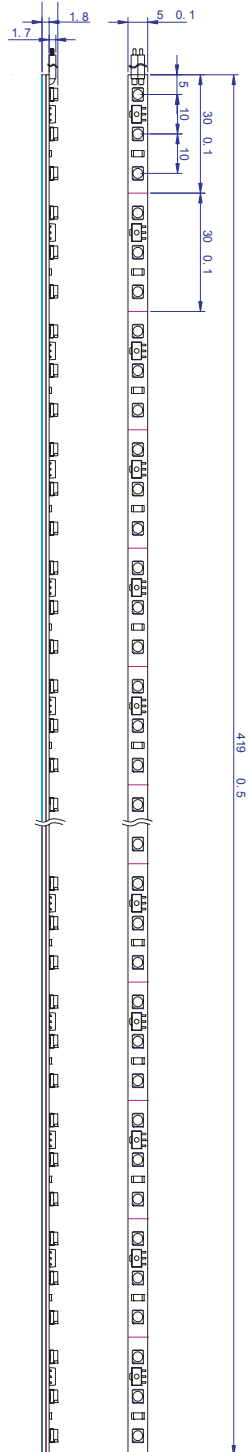
Technical Data

	IP00	IP66
	Application: - dry location - contour lighting - edge lighting	Application: - wet location - contour lighting - edge lighting
System Type:	Rigid LED Bar	Rigid LED Bar
Certification Level:	IP00	IP66
Circuit Type:	12V DC Parallel	12V DC Parallel
Input Voltage Maximum	15V DC	15V DC
Current Consumption	280mA	280mA
Power Consumption/Bar	3.4W	3.4W
Max Power Consumption/Bar	4.1W	4.1W
Life Expectancy @ 77°F and 45% humidity.	30,000 h	30,000 h
Dimensions	420 x 5 x 3,5	423 x 7,2 x 5,3
Quantity of LED/Bar	42	42
Beam Angle	120°	120°
Distance between each LED	10-mm	10-mm
Cut Positions	Every 3 LED (30 mm)	Every 3 LED (30 mm)
LED Type	1 chip (0.1 W)	1 chip (0.1 W)
Max No of serial connections	5 Bars	5 Bars
Wire Cross Section	2-core AWG20 (0.519 mm ²)	2-core AWG20 (0.519 mm ²)
Line-in Cable	500 mm	500 mm
Wire ends	5 mm (insulated)	5 mm (insulated)
Programmable Options	Dim and Toggle	Dim and Toggle
Connection Options	3M VHB Tape (Pre installed)	3M VHB Tape (Pre installed)
Insulation	N.A.	Silicone
Operational Temperature	-16°C up to 40°C	-16°C up to 40°C
Storage Temperature	-25°C up to 55°C	-25°C up to 55°C
Weight	15 grams	34 grams
Accessories:		
Endcaps:	LETRO-LCM-ENDCAP (3.2 mm Ø)	LETRO-LCM-ENDCAP (3.2 mm Ø)
Extenders:	LETRO-CONNECTOR-XTEND (transparent, IP66, 0.5 mm ²)	LETRO-CONNECTOR-XTEND (transparent, IP66, 0.5 mm ²)
LED Cable:	LETRO-CABLE-IP2P (2-core flat wire, 0.5 mm ²)	LETRO-CABLE-IP4P (2-core flat wire, 0.5 mm ²)
	The information presented in this document does not form part of any quotation or contract, is believed to be accurate and reliable and may be changed without notice.	

12V
DC

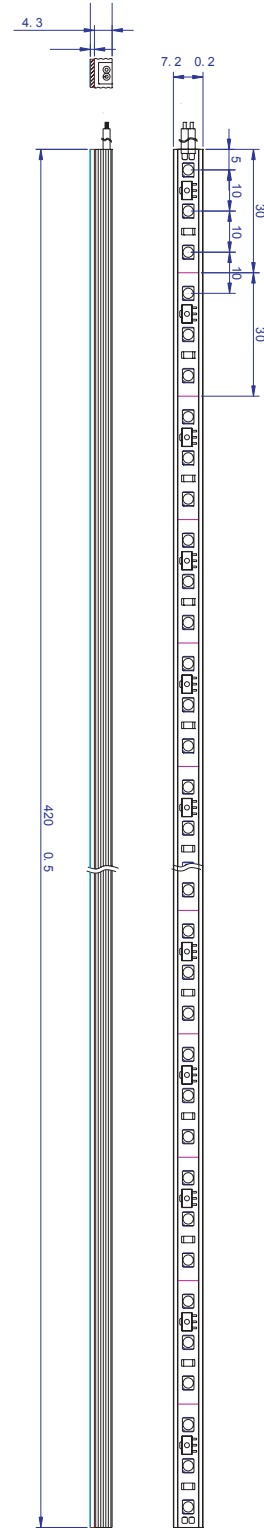


IP 00



SL-CL-420W65K

IP 66



SL-IP-CL-420W65K



White	6500K	360 lm	63 : CRI
Product no. IP00	SL-HI-500W65K	Product no. IP66	SL-IP-HI-500W65K
Product no. IP66	SL-IP -HI-1000W65K		
White	3500K	300 lm	68 : CRI
Product no. IP00	SL-HI-500W35K	Product no. IP66	SL-IP-HI-500W35K
Red	625 n.m	Product no. IP00	SL-HI-500R
Product no. IP66	SL-IP-HI-500R		
Green	525 n.m	Product no. IP00	SL-HI-500G
Product no. IP66	SL-IP-HI-500G		
Blue	465 n.m	Product no. IP00	SL-HI-500B
Product no. IP66	SL-IP-HI-500B		
Amber	595 n.m	Product no. IP00	SL-HI-500A
Product no. IP66	SL-IP-HI-500A		
RGB	625/525/465 n.m	Product no. IP00	SL-HI-500RGB
Product no. IP66	SL-IP-HI-500RGB		

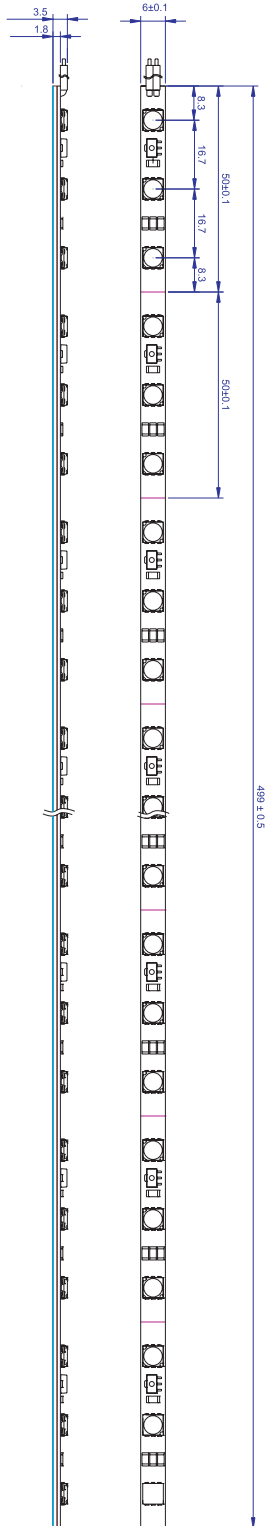
Technical Data

	IP00	IP66
	Application: - dry location - contour lighting - edge lighting	Application: - wet location - contour lighting - edge lighting
System Type:	Rigid LED Bar	Rigid LED Bar
Certification Level:	IP00	IP66
Circuit Type:	12V DC Parallel	12V DC Parallel
Input Voltage Maximum	15V DC	15V DC
Current Consumption	600mA	600mA
Power Consumption/Bar	7.2W	7.2W / 14.4W
Max Power Consumption/Bar	8.6W	8.6W / 17.2W
Life Expectancy @ 77°F and 45% humidity.	30,000 h	30,000 h
Dimensions	500 x 6 x 3.5	503 x 8.2 x 4.8 1003 x 8.2 x 4.8
Quantity of LED/Bar	30	30 / 60
Beam Angle	120°	120°
Distance between each LED	16.7-mm	16.7-mm
Cut Positions	Every 3 LED (50 mm)	Every 3 LED (50 mm)
LED Type	3 chip (0.3 W)	3 chip (0.3 W)
Max No of serial connections	3 Bars	3 Bars
Wire Cross Section	2-vein AWG20 (0.519 mm ²)	2-vein AWG20 (0.519 mm ²)
Line-in Cable	500 mm	500 mm
Wire ends	5 mm (insulated)	5 mm (insulated)
Programmable Options	Dim and Toggle	Dim and Toggle
Connection Options	3M VHB Tape (Pre installed)	3M VHB Tape (Pre installed)
Insulation	N.A.	Silicone
Operational Temperature	-16°C up to 40°C	-16°C up to 40°C
Storage Temperature	-25°C up to 55°C	-25°C up to 55°C
Weight	18 grams	42 grams
Accessories:		
Endcaps:	LETRO-LCM-ENDCAP (3.2 mm Ø)	LETRO-LCM-ENDCAP (3.2 mm Ø)
Extenders:	LETRO-CONNECTOR-XTEND (transparent, IP66, 0.5 mm ²)	LETRO-CONNECTOR-XTEND (transparent, IP66, 0.5 mm ²)
LED Cable:	LETRO-CABLE-IP2P (2-core flat wire, 0.5 mm ²)	LETRO-CABLE-IP4P (2-core flat wire, 0.5 mm ²)

The information presented in this document does not form part of any quotation or contract, is believed to be accurate and reliable and may be changed without notice.

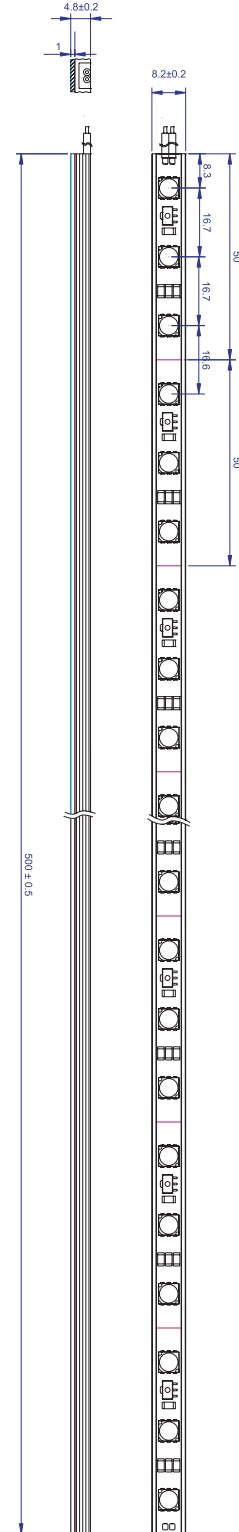
12V DC | CE | PWM | CONSTANT CURRENT DRIVING SYSTEM | Technology by SAMSUNG

IP 00



SL-HI-500W65K

IP 66



SL-IP-HI-500W65K